



DURHAM COUNTY MAIN LIBRARY PLANNING & PROGRAMMING

February 23, 2009

Project & Team Introduction
Library Trends
Existing Conditions
Design Concepts
Program Developments
Metrics & Measures

Agenda



Library Trends



Marketplace Library
Display Options
Clear Signage



Adult Services

Library Trends



Marketplace Library
Display Options
Clear Signage

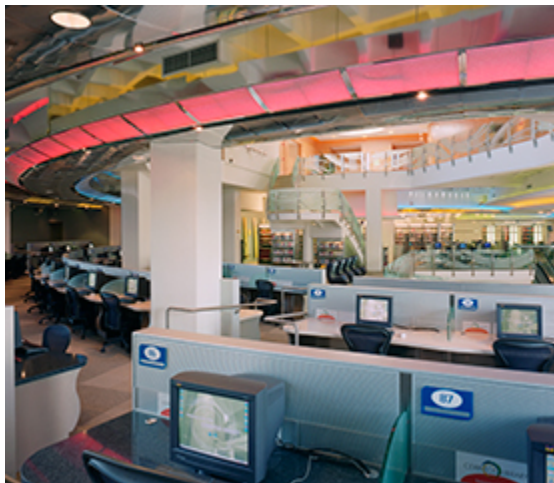


Adult Services

Library Trends



Public Computers
Internet Access
Computer Labs



Adult Services

Library Trends



Study Rooms
Break-out Space
Conferencing
Large Meetings
Community Outreach



Adult Services

Library Trends



Casual Reading Areas
Well Lit
Comfortable



Adult Services

Library Trends



Fun Environment
Colorful
Special Graphics
Kid-Scale Furniture
Access to Computers
Creative Play



Fun Environment
Colorful
Special Graphics
Kid-Scale Furniture
Access to Computers
Creative Play



Fun Environment
Colorful
Special Graphics
Kid-Scale Furniture
Access to Computers
Creative Play



Fun Environment
Colorful
Special Graphics
Kid-Scale Furniture
Access to Computers
Creative Play



Teen Identity



Teen Area

Library Trends



Access to Technology Connectivity/Mobility



Teen Area

Library Trends



Retail
Booksales
Friends Space



Special Features

Library Trends



Convenient Service
Customer Focus
Self Check-Out



Special Features

Library Trends



Alternative Media Digital/Audio Labs



Special Features

Library Trends



Community Resource
Exhibit Display
Café/Vending



Special Features

Library Trends



Existing Conditions



Electrical Systems
Lighting | Exterior & Interior
Emergency Generator
Fire Alarm
Fire Protection
HVAC
Chilled & Hot Water
Plumbing

The Building

Existing Conditions

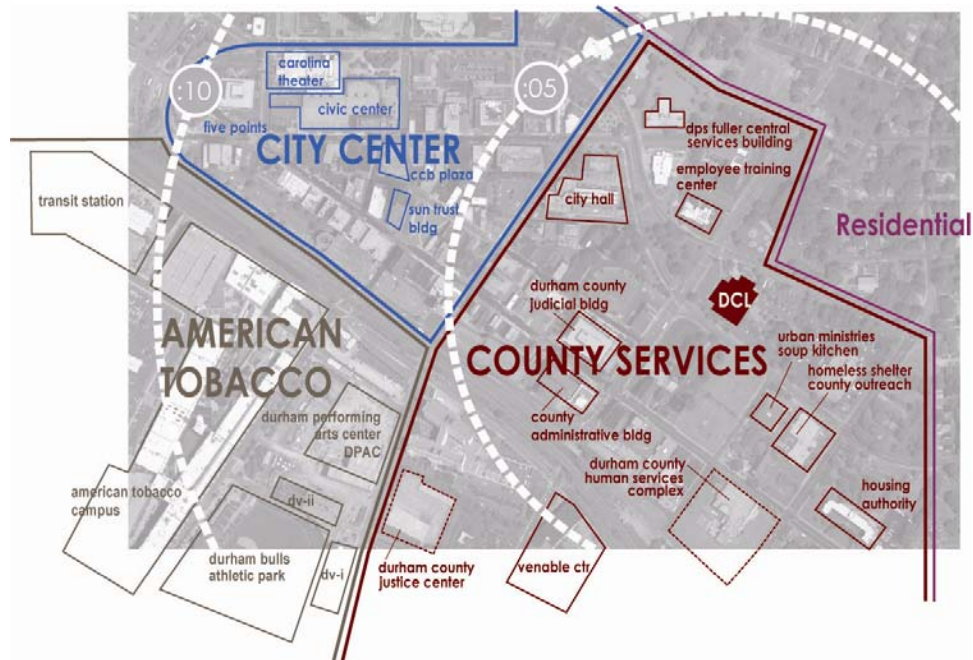


Location
Connectivity
Image/Visibility
Parking
Entry Security & Clarity
Interior Environment

Perception of The Building

Existing Conditions





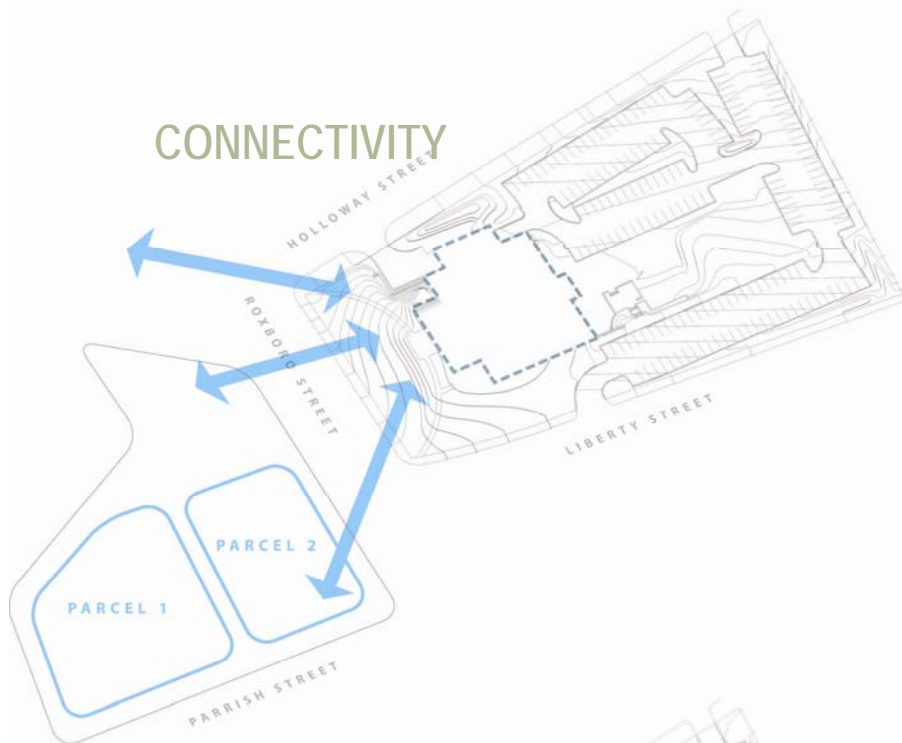
LOCATION

Perception of the Building

Existing Conditions



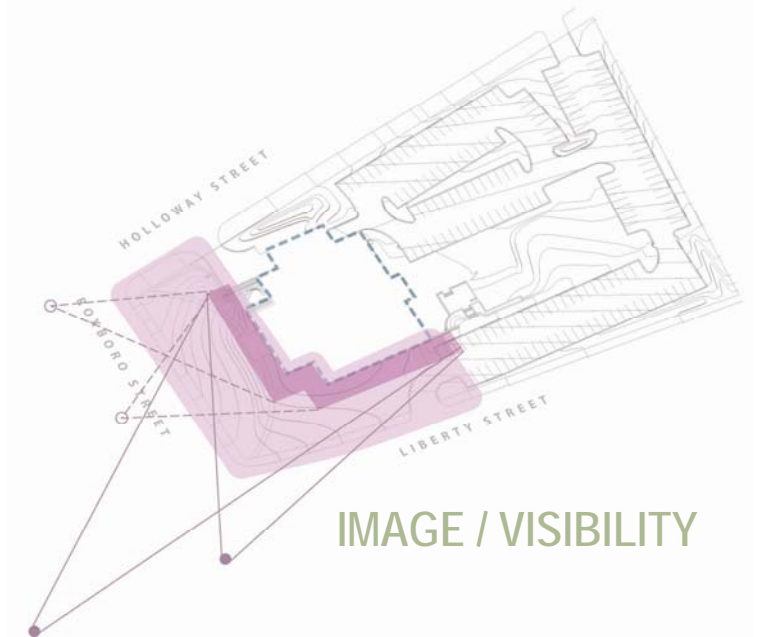
CONNECTIVITY



PARKING



IMAGE / VISIBILITY



ENTRY CLARITY & SECURITY



Perception of the Building

Existing Conditions



LEGEND

Public Meeting/Program

Library Staff & Admin

Lobby



Perception of the Building



Design Concepts



NEW MAIN ENTRY ON LIBERTY

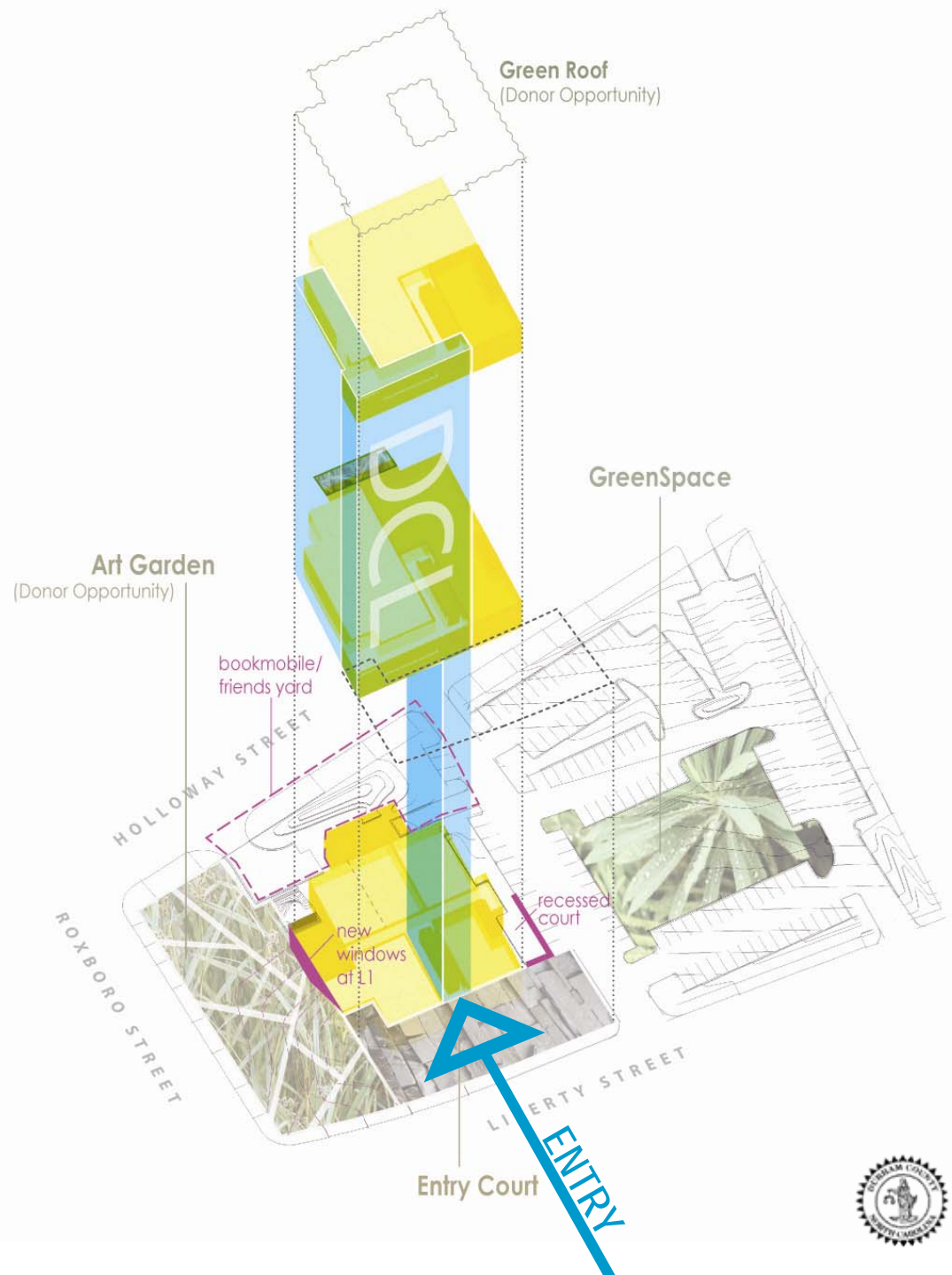
Re-orient Parking & Access

Art Garden Opportunity

New Bookmobile enclosure



Site



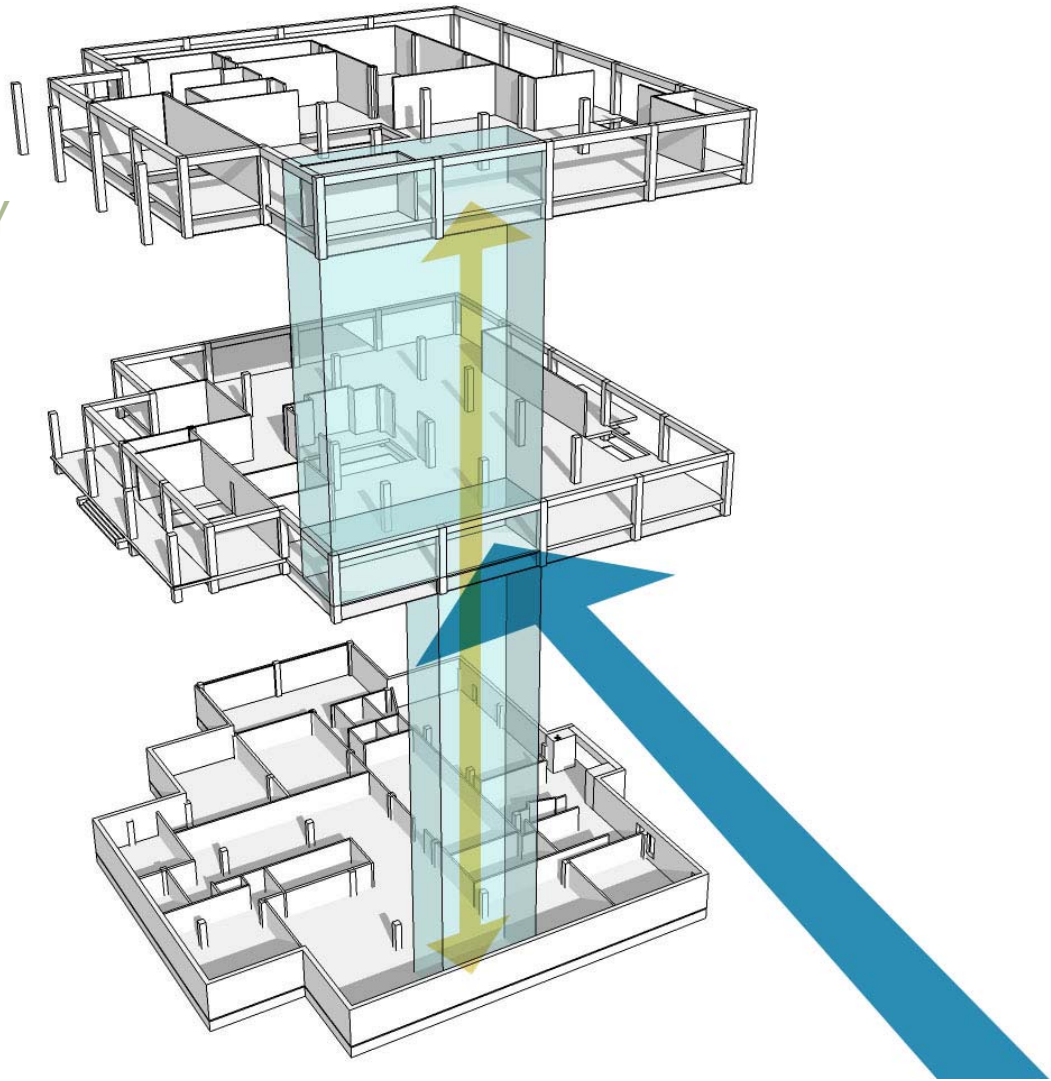
NEW MAIN ENTRY ON LIBERTY

New front door and lobby

Single point of public entry

Visible and accessible

Architecture clearly identifies entrance



Entrance & Lobby

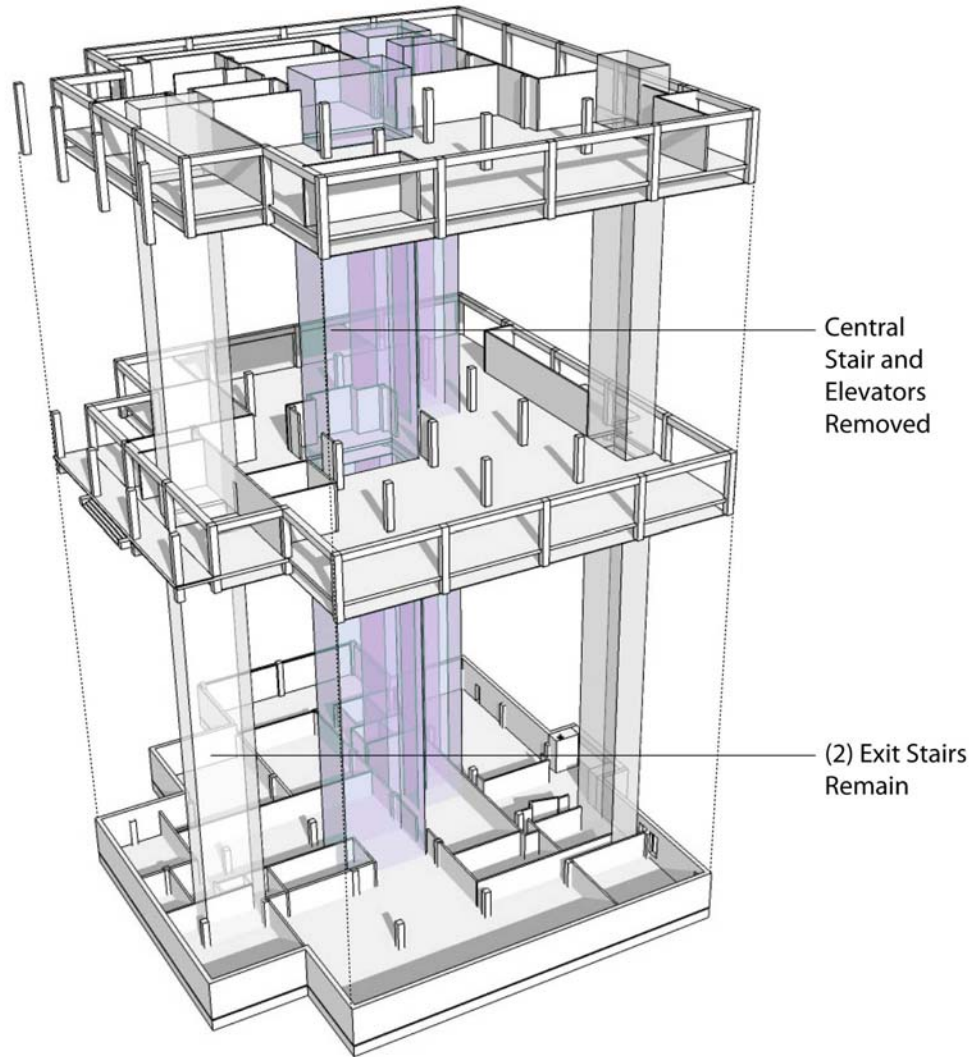
Design Concepts



Central stair and elevators
removed, and the floor openings
filled

Improves circulation

Addresses security concerns



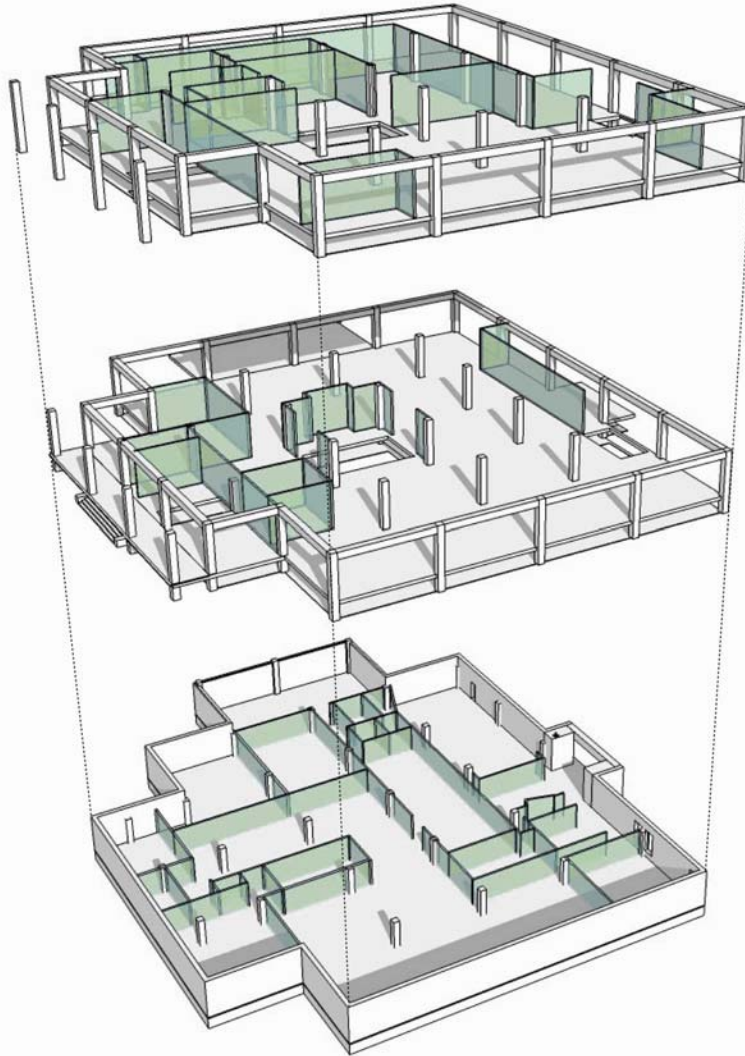
Vertical Circulation

Design Concepts

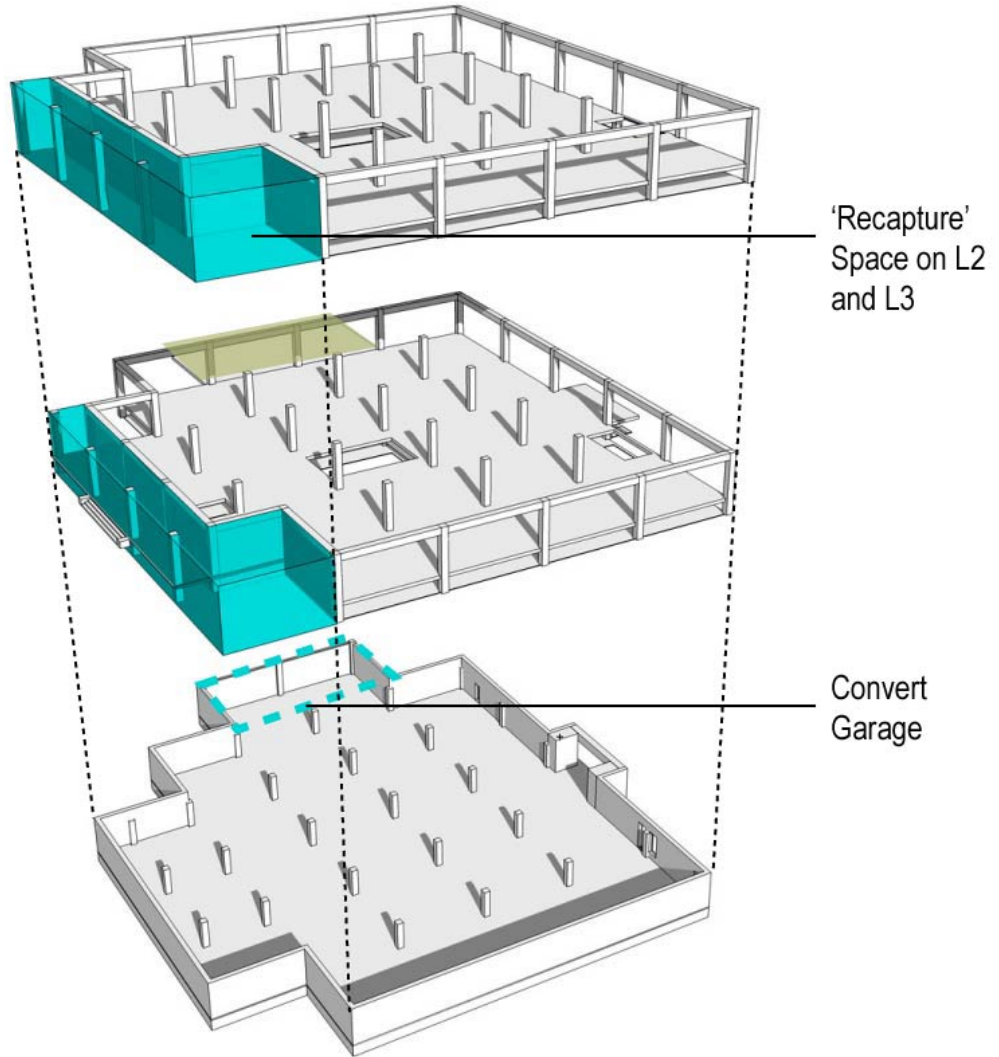


Selective demolition of
interior walls

Moves toward open floor plan



Existing Area	65,000 gsf
L2 Additional Area	1,800 gsf
L3 Additional Area	1,800 gsf
TOTAL	68,600 gsf



Building Area

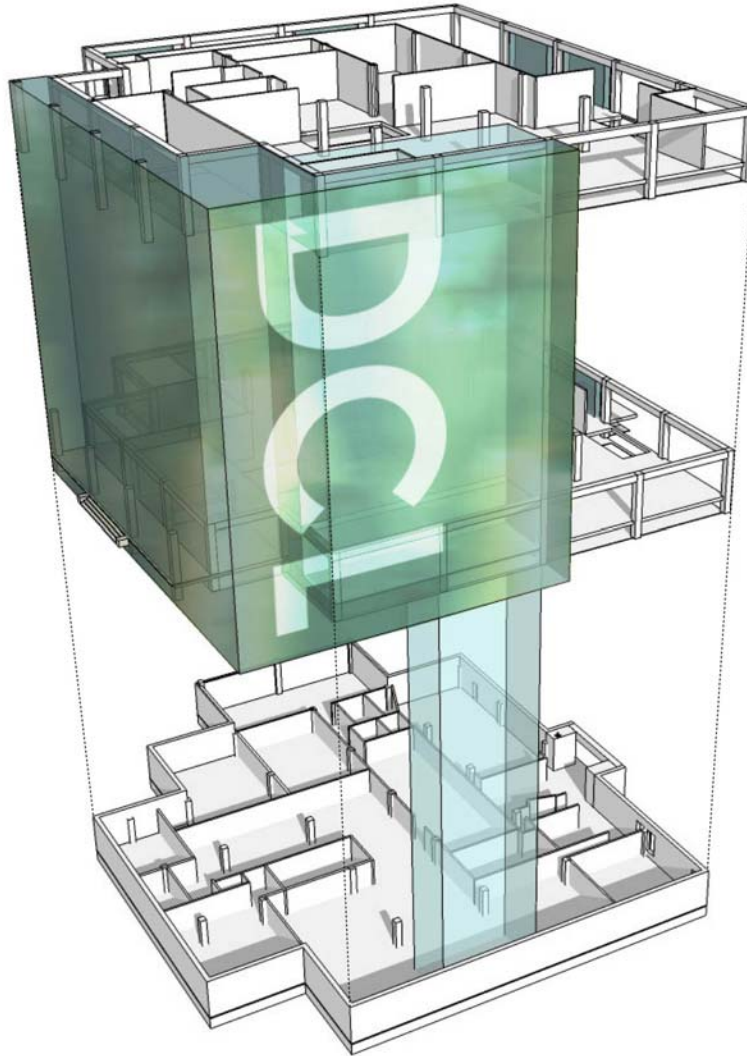
Design Concepts



New Exterior Façade

New Image/Brand

Transparency & Light

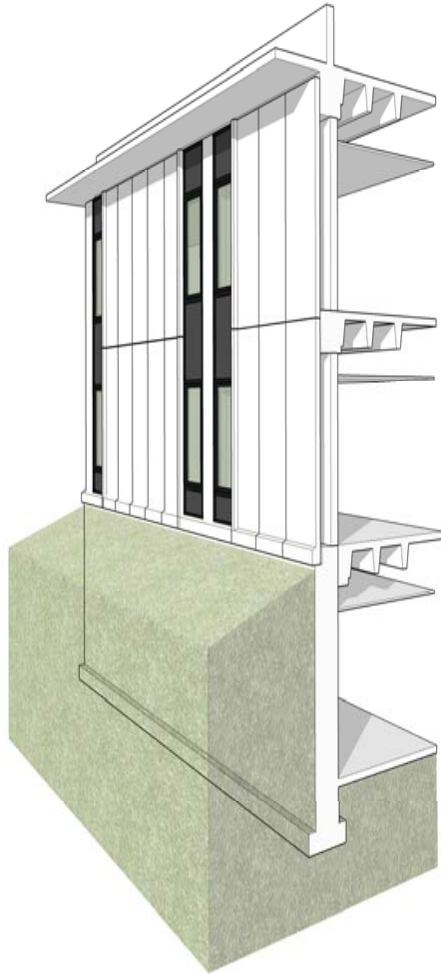


Image

Design Concepts



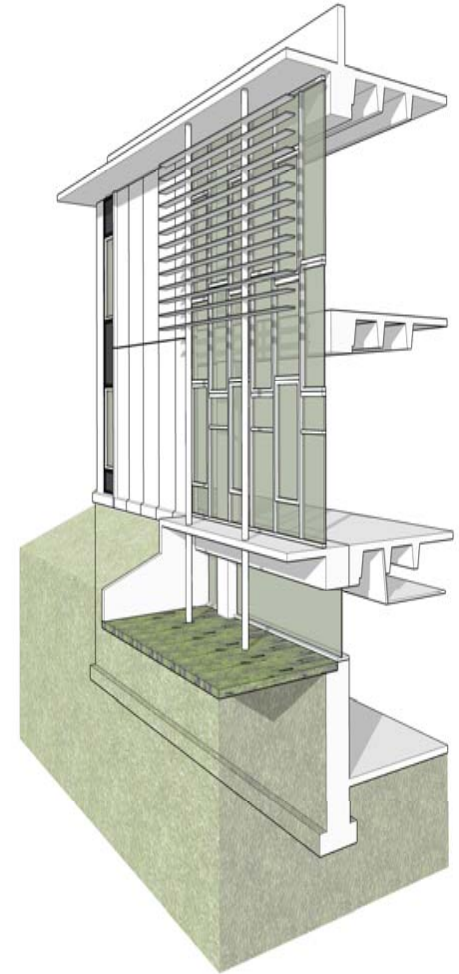
EXISTING



PUNCHED OPENINGS



GLASS WALLS



Skin

Design Concepts



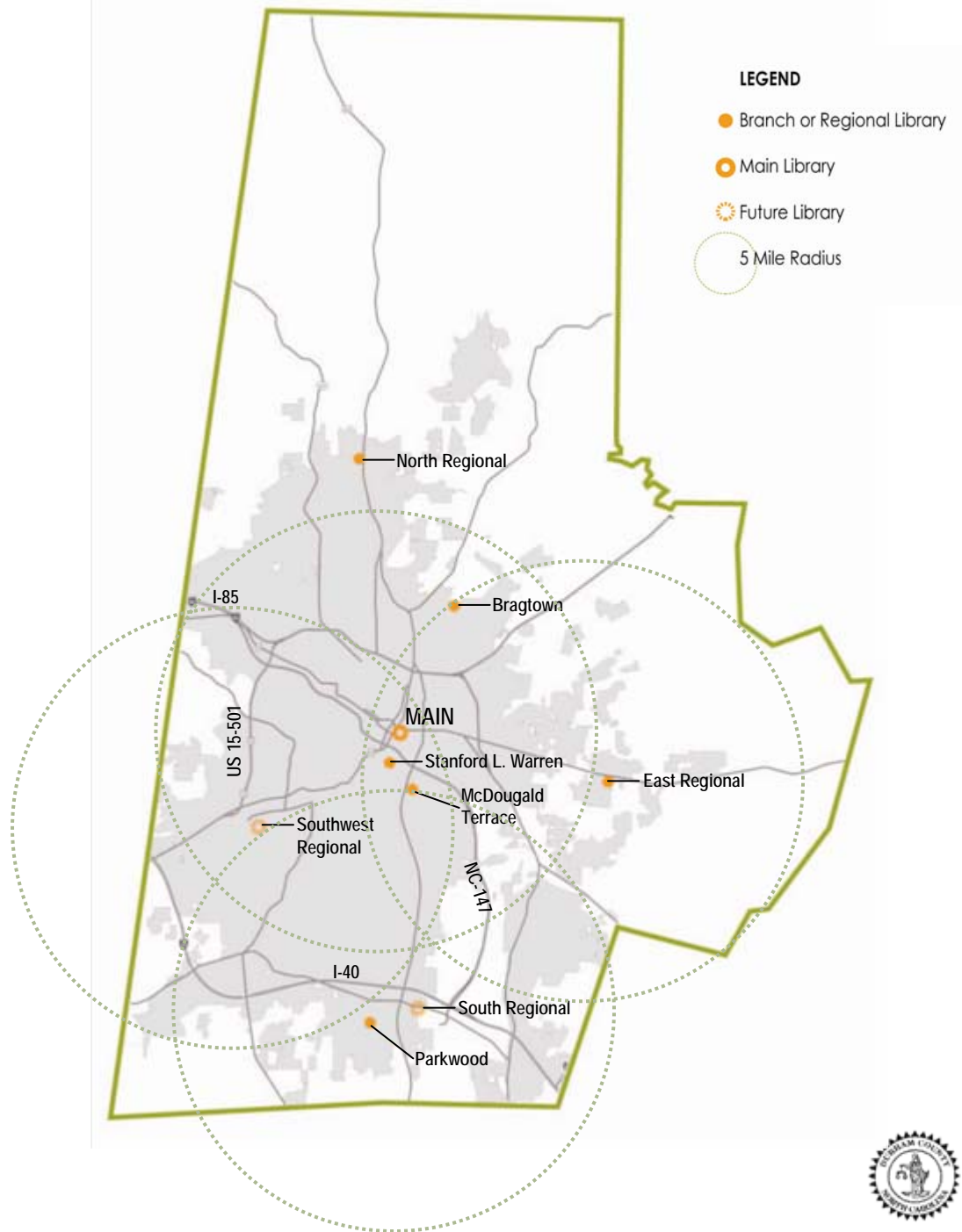
Program Developments



COUNTY LIBRARY SYSTEM

Main	65,000 sf
North Regional	26,649 sf
East Regional	26,649 sf
South Regional (2010)	27,320 sf
Southwest Regional (2010)	25,000 sf
Stanford L. Warren	9,797 sf
McDougald Terrace	450 sf
Bragtown	1,000 sf
Parkwood	9,871 sf

Implementing
The Strategic Plan



- Goal 1 The library is **Customer-Centered** and welcoming.
- Goal 2 Prepare & support **Children & Teens**.
- Goal 3 Provide access to **Information Technology Resources**.
- Goal 4 Embrace and promote **Durham's Cultural Heritage**.

Marketplace

Wider Aisles / Shorter Shelving Units
More face-out & special display
Customer service / kiosks, floating staff
Developed Lobby area / first impression

Teens

Almost 3,000 gsf dedicated area
Teaming space, booth seating
Study Rooms
Gaming / Digital Learning
Dedicated Computers

Children

Enlarged overall area from 8,000 to 10,604 gsf
Increase program space
Focus on collection
Additional computers and study space

N.C. Room

4,700 gsf

Friends

Dedicated Friends space
Friends ongoing booksale/retail near check-out
Spill-out space at exterior for book sales



- Goal 1 The library is **Customer-Centered** and welcoming.
- Goal 2 Prepare & support **Children & Teens**.
- Goal 3 Provide access to **Information Technology Resources**.
- Goal 4 Embrace and promote **Durham's Cultural Heritage**.

Resources at Main

EXISTING

PROPOSED PROGRAM

Public Computers

67

158

Total Public Seating

359

452

Table Seats

184

206

Lounge Seats

21

31

Children's Program Rm

44

65

Meeting Room

110

150

Study Rooms

0

17

Exhibit Display Area

0

1

Vending/Café

0

1

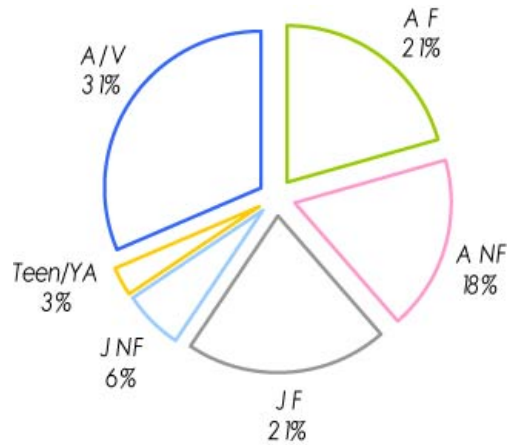
Implementing
The Strategic Plan

Program Developments

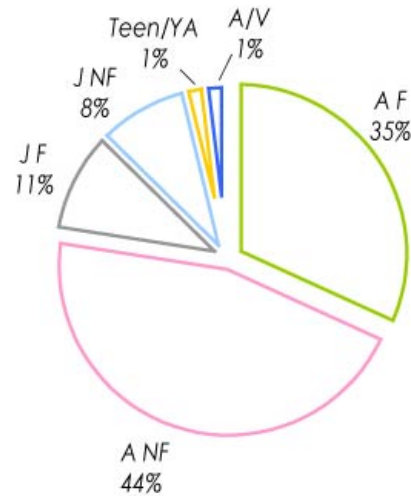


TARGET COLLECTIONS

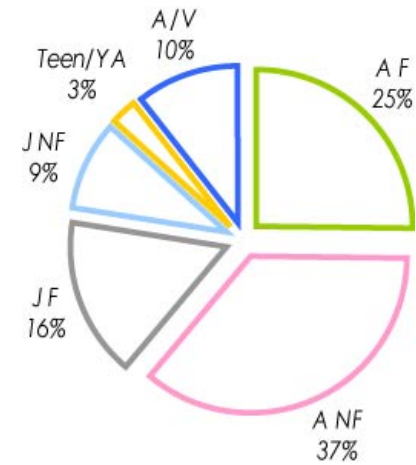
CIRCULATION



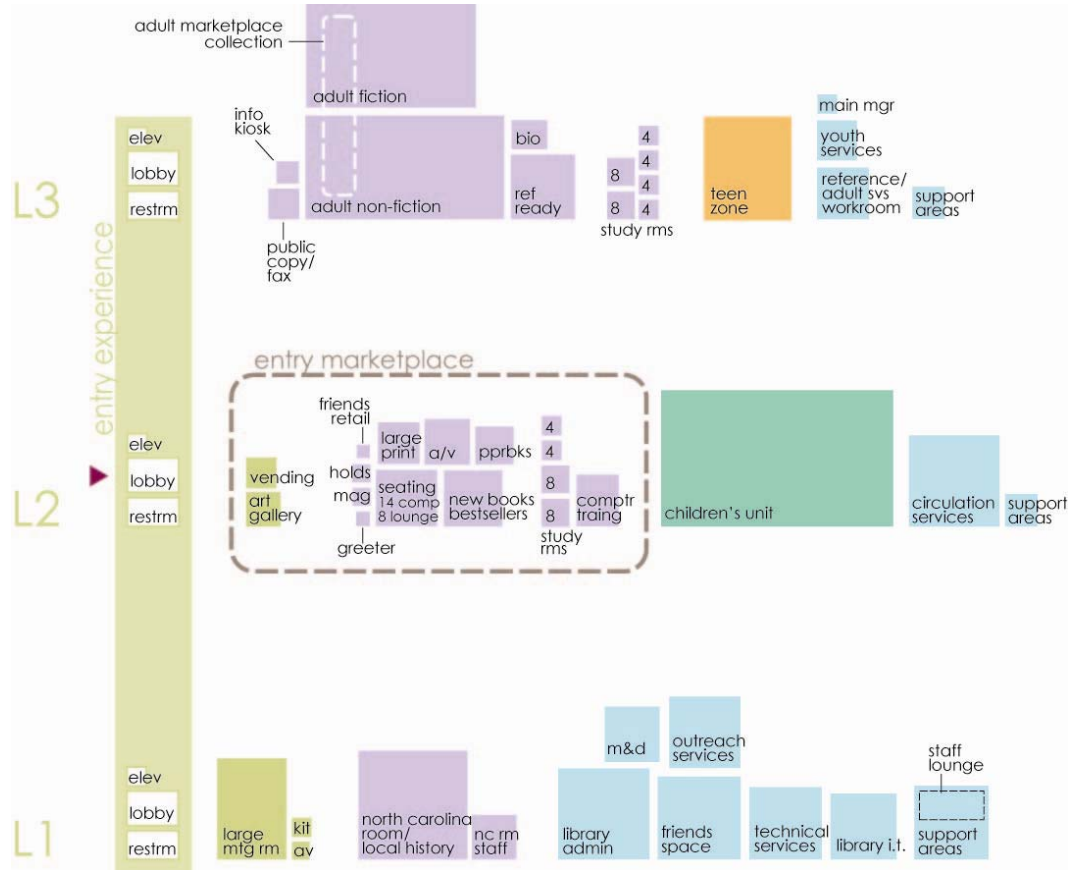
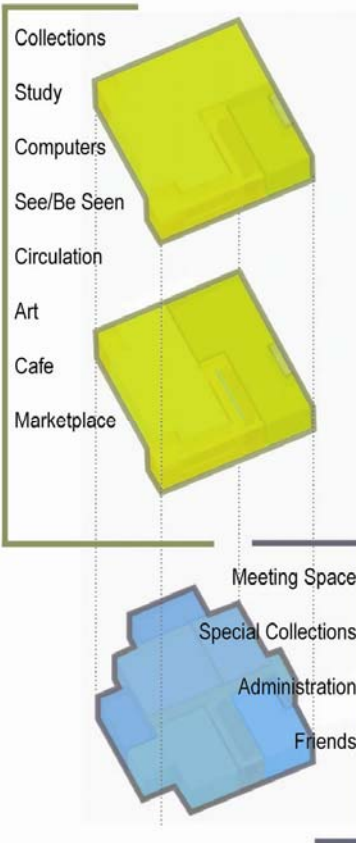
ZERO CIRCULATION



PROPOSED COLLECTIONS



THE LIBRARY EXPERIENCE



Program Organization

Program Developments



LEGEND

- General Public Spaces
- Adult Services
- Children's Library
- Teen Zone
- Library Staff & Admin
- Bldg Service & Support



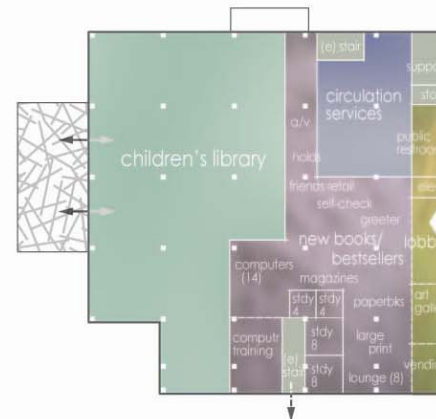
60 30 0 60 120

Floor Plans

Level 3

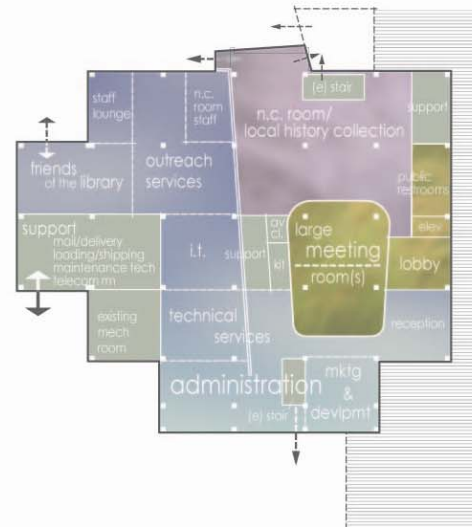


Level 2



NEW MAIN ENTRY

Level 1



High-Performance Building Policy

Target: LEED Certified

Sustainability

Program Developments



Metrics & Measures



VOLUMES PER CAPITA*

2007-2008

<u>Library System</u>	<u>vol/capita</u>
DCL	2.1
NC Average	1.8
Mecklenburg	1.4
Wake	2.0
Guilford	1.3
Forsyth	1.9

CIRCULATION PER CAPITA*

2005-2006

<u>Library System</u>	<u>Circulation</u>	<u>Population</u>	<u>circ/capita</u>
DCL	1,359,711	247,000	5.5
NC Average			5.6

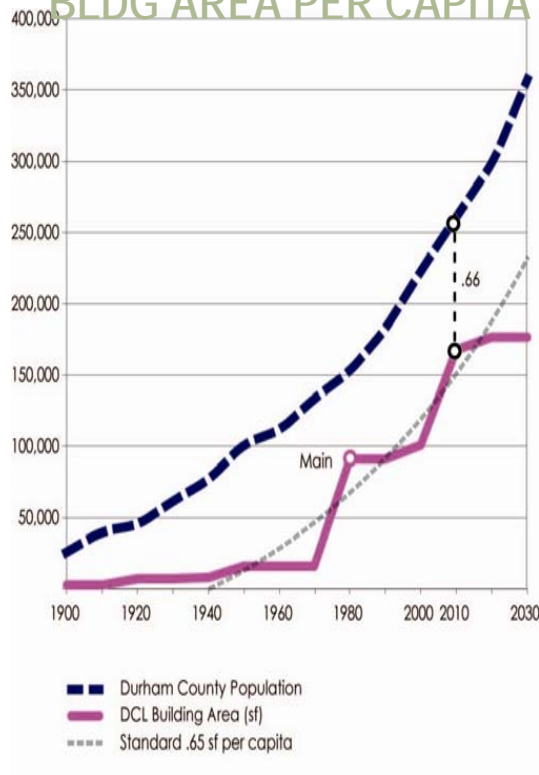
2007-2008

<u>Library System</u>	<u>Circulation</u>	<u>Population</u>	<u>circ/capita</u>
DCL	1,900,000	261,000	7.3
NC Average			5.9
Mecklenburg Co	6,773,992	863,147	7.8
Wake Co	10,390,295	832,590	12.5
Guilford Co	1,515,202	364,032	4.2
Forsyth Co	1,913,042	338,667	5.6
Chapel Hill Mun	911,084	54,904	16.6

*Data compiled by The State Library of North Carolina and the DCL



BLDG AREA PER CAPITA^{1,2} SYSTEM-WIDE RESOURCES



RESOURCE	EXISTING number measure		METRIC ¹	Approx. 2010-2012 (including renovations to Main) number measure		2030 PROJECTED number measure	
Collection (items)	555,629	2.11	2.0 per capita	612,500	2.21	612,500	1.73
Public Computers	173	1.6 / 2,500	1 / 2,500 people	264	2.4 / 2,500	264	1.9 / 2,500
Total Public Seating	1,122	4 / 1,000	3-4 / 1,000 people	1,621	6 / 1,000	1,621	5 / 1,000
Building Area (sf)	145,494	0.55	0.65 per capita	180,600	0.66-0.67	180,600	0.51

- Standards based on national trends and on the Guidelines for NC Public Libraries adopted by the NC Public Library Directors Association
- Population Estimates projected by
Durham City-County Planning Dept, Population Estimates, updated Jul-08
NC Office of State Budget and Management, Population Estimates & Projections, updated Jun-06

Per Capita Statistics

Metrics & Measures



Conceptual Schedule

Bond Referendum

Design/Documentation 12 Months

Bid/Negotiation 2 Months

Construction 14 Months

Occupy



Conceptual Cost

68,600 GSF

\$14,247,382

	GSF		UNIT		TOTAL
Interior Renovation ¹	63,554	\$	100	\$	6,355,400
Interior Renovation ² (Lobby L2, L3 & 1/2 L1)	1,500	\$	125	\$	187,500
Shell Renovation ³	3,546	\$	200	\$	709,200
Site Allowance				\$	550,000
			Subtotal	\$	7,802,100
Construction Contingency (10%)				\$	780,210
SubTotal Construction Costs				\$	8,582,310
Design Fees & Other Soft Costs (10%)				\$	858,231
Design Contingency (10%)				\$	944,054
			SubTotal	\$	10,384,595
Furn - General	68,600	\$	18	\$	1,234,800
Furn - Shelving	68,600	\$	10	\$	686,000
Technology	68,600	\$	9	\$	617,400
RFID system, 10bin booksorters & self check-out machines					<i>\$275,000 lump sum not included</i>
Total Project Costs					\$ 12,922,795 Feb 2010 mid-point of construction
Escalated					\$ 14,247,382 Feb 2012 mid-point of construction

Metrics & Measures



BOARD OF COUNTY COMMISSIONERS
February 23, 2009

Durham County Library

Main Library Planning & Programming